

# Test Report

Report No.RHS06F004079001

Page 1 of 7

**Applicant** HANGZHOU LIN'AN YUANYANG CABLE CO. LTD  
**Address** NO.80 XIAYUQIAO VILLAGE, LINGLONG STREET, LIN AN, HANGZHOU  
 CITY

The following sample(s) and sample information was/were submitted and identified by/on the behalf of the client

No.	Sample Name	Material
1	BRAND: KAYBE NETWORKING	Copper clad steel Copper clad Aluminum
2	RG59C/U+2C black、	PVC
3	RG59B/U+2Cblack、 RG59C/U+2C	PVC
4	RG6U/CS , RG6U/CU RG59C/U white	PE PVC

Sample Received Date Dec. 26, 2018  
 Testing Period Dec. 26, 2018 to Dec. 30, 2018

**Test Requested** :As specified by client, to test Lead(Pb), Cadmium(Cd), Mercury(Hg), Hexavalent Chromium(Cr(VI)), Polybrominated Biphenyls(PBBs), Polybrominated Diphenyl Ethers(PBDEs) in the submitted sample(s).

**Test Method/Test Result(s):** Please refer to the following page(s).

# Test Report

Tested by Sha Chen

Reviewed by Lin Zhang

Wei Miao

Date Dec. 30, 2018



Approved by

Wei Miao  
Approved Signatory

No. 1382054036

Centre Testing International(Ningbo)Co.,Ltd.

7-8/F/.,Building A,No.750.Chuangyuan Road,Gaoxin District,Ningbo,Zhejiang,China

Report No.RHS06F004079001

Page 2 of 7

**Test Method:**

Tested Item(s)	Test Method	Measured Equipment(s)
Lead (Pb)	IEC 62321:2008 Ed.1 Sec.8	ICP-OES
	IEC 62321:2008 Ed.1 Sec.9	
Cadmium (Cd)	IEC 62321:2008 Ed.1 Sec.8	ICP-OES
	IEC 62321:2008 Ed.1 Sec.9	
Mercury (Hg)	IEC 62321:2008 Ed.1 Sec.7	ICP-OES
Hexavalent Chromium (Cr(VI))	IEC 62321:2008 Ed.1 Annex B	UV-Vis
	IEC 62321:2008 Ed.1 Annex C	
Polybrominated Biphenyls (PBBs)	IEC 62321:2008 Ed.1 Annex A	GC-MS
Polybrominated Diphenyl Ethers (PBDEs)	IEC 62321:2008 Ed.1 Annex A	GC-MS

**Test Result(s):**

Tested Item(s)	Result(mg/kg)				MDL
	1*	2*	3*	4	
Lead (Pb)	N.D.	N.D.	33 mg/kg	N.D.	2 mg/kg
Cadmium (Cd)	N.D.	N.D.	N.D.	N.D.	2 mg/kg
Mercury (Hg)	N.D.	N.D.	N.D.	N.D.	2 mg/kg
Hexavalent Chromium (Cr(VI))	—	N.D.	N.D.	N.D.	2 mg/kg
	Negative	—	—	—	/

# Test Report

Tested Item(s)	Result(mg/kg)			MDL
	2*	3*	4	
<b>Polybrominated Biphenyls(PBBs)</b>				
Monobromobiphenyl	N.D.	N.D.	N.D.	5 mg/kg
Dibromobiphenyl	N.D.	N.D.	N.D.	5 mg/kg
Tribromobiphenyl	N.D.	N.D.	N.D.	5 mg/kg
Tetrabromobiphenyl	N.D.	N.D.	N.D.	5 mg/kg
Pentabromobiphenyl	N.D.	N.D.	N.D.	5 mg/kg
Hexabromobiphenyl	N.D.	N.D.	N.D.	5 mg/kg
Heptabromobiphenyl	N.D.	N.D.	N.D.	5 mg/kg
Octabromobiphenyl	N.D.	N.D.	N.D.	5 mg/kg
Nonabromobiphenyl	N.D.	N.D.	N.D.	5 mg/kg
Decabromobiphenyl	N.D.	N.D.	N.D.	5 mg/kg

Report No.RHS06F004079001

Page 3 of 7

**Test Result(s):**

Tested Item(s)	Result(mg/kg)			MDL
	2*	3*	4	
<b>Polybrominated Diphenyl Ethers(PBDEs)</b>				
Monobromodiphenyl ether	N.D.	N.D.	N.D.	5 mg/kg
Dibromodiphenyl ether	N.D.	N.D.	N.D.	5 mg/kg
Tribromodiphenyl ether	N.D.	N.D.	N.D.	5 mg/kg
Tetrabromodiphenyl ether	N.D.	N.D.	N.D.	5 mg/kg
Pentabromodiphenyl ether	N.D.	N.D.	N.D.	5 mg/kg
Hexabromodiphenyl ether	N.D.	N.D.	N.D.	5 mg/kg
Heptabromodiphenyl ether	N.D.	N.D.	N.D.	5 mg/kg
Octabromodiphenyl ether	N.D.	N.D.	N.D.	5 mg/kg
Nonabromodiphenyl ether	N.D.	N.D.	N.D.	5 mg/kg

# Test Report

Decabromodiphenyl ether	N.D.	N.D.	N.D.	5 mg/kg
-------------------------	------	------	------	---------

**Tested Sample/Part Description**

- 1\* Mixed test, Cupreous metal and two kinds of metal with cupreous cover layer
- 2\* Mixed test, white wire skin , black wire skin and blue wire skin
- 3\* Mixed test, black wire skin , red wire skin and purple wire skin
- 4 White plastic

**Note:** 1.The sample(s) had been dissolved totally tested for Lead, Cadmium, Mercury.  
 2.\*=As specified by client, the test was conducted by mixing several samples together.The Result(s) shown on this report may be different from the content of any homogeneous material.

-MDL = Method Detection Limit

-N.D. = Not Detected (<MDL)

-mg/kg = ppm = parts per million

-Negative = Absence of Cr(VI) , the detected Cr(VI) concentration in the boiling water extraction solution is less than 0.02 mg/kg with 50cm<sup>2</sup> sample surface area used.

Report No.RHS06F004079001

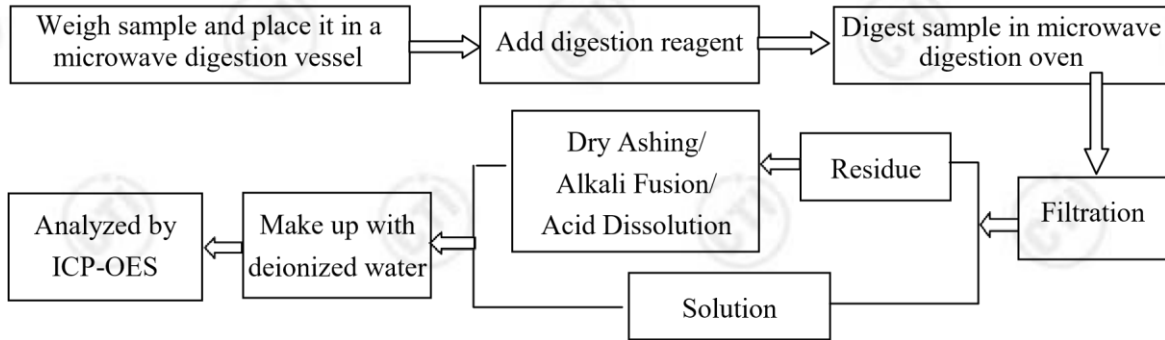
Page 4 of 7

**Test Process:**

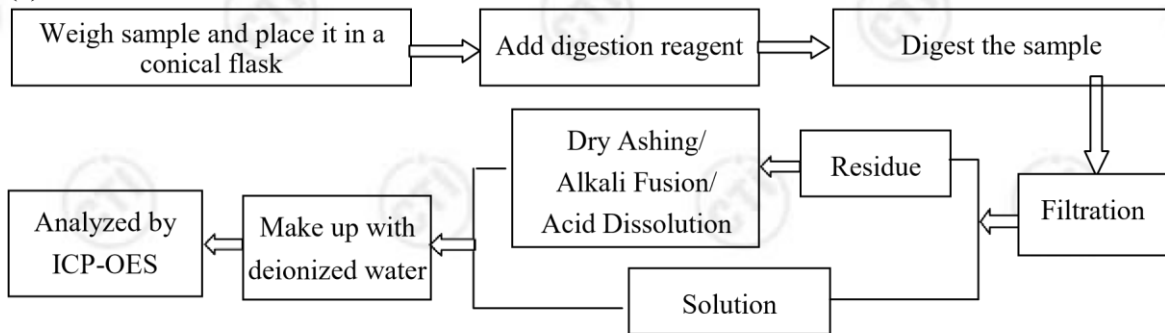
# Test Report

## 1. Pb/Cd

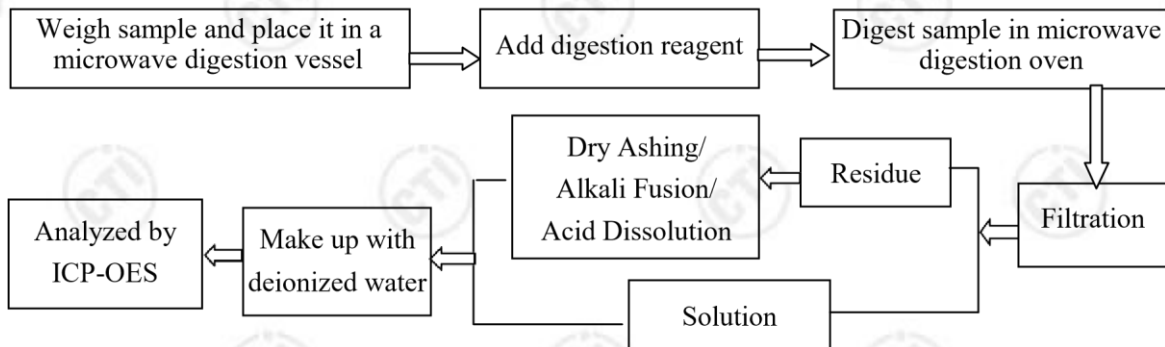
### (1) IEC 62321:2008 Ed.1 Sec.8



### (2) IEC 62321:2008 Ed.1 Sec.9



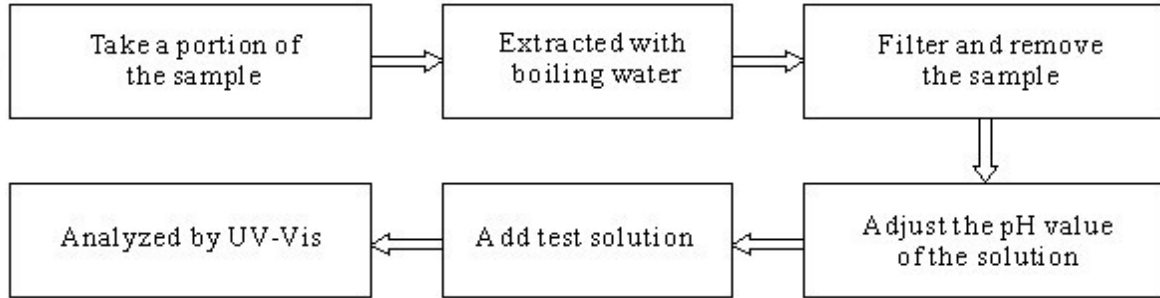
## 2. Hg



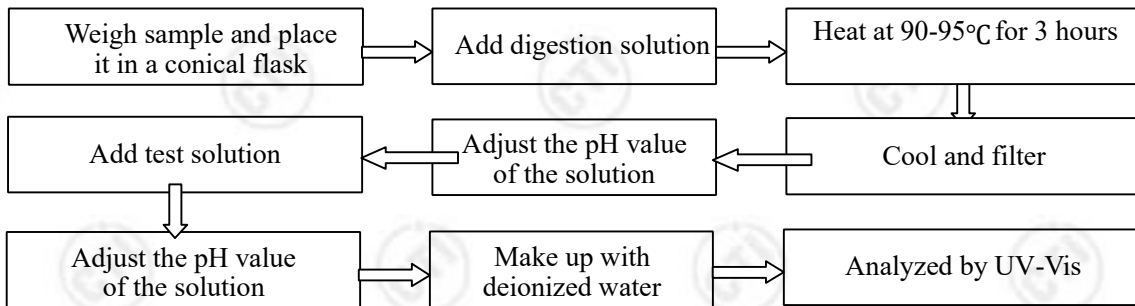
## 3. Chromium(VI)

# Test Report

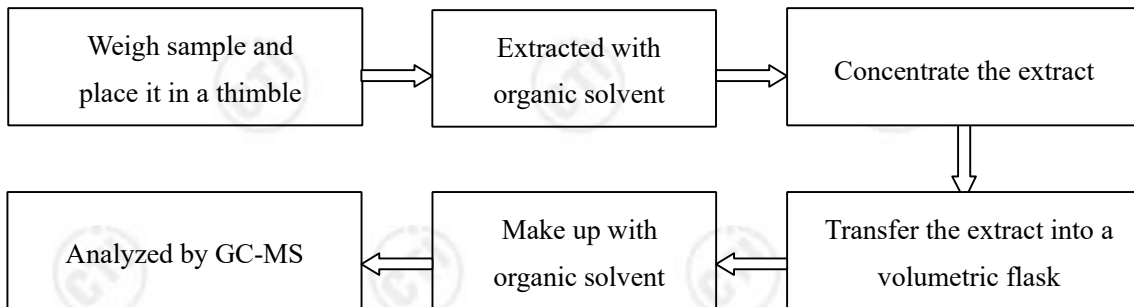
## (1) IEC 62321:2008 Ed.1 Annex B



## (2) IEC 62321:2008 Ed.1 Annex C



## 4. PBBs/PBDEs



# Test Report

## Photo(s) of the product (s)



Report No.RHS06F004079001 Page 7 of 7 **Photo(s) of the sample(s)**

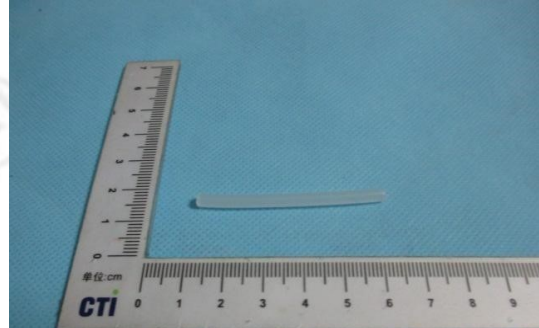


1



2

# Test Report



3 4

\*\*\* End of report \*\*\*

The test report is effective only with both signature and specialized stamp. The result(s) shown in this report refer only to the sample(s) tested. Without written approval of CTI, this report can't be reproduced except in full.